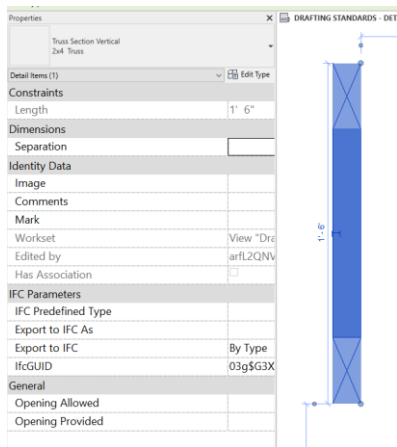




Intelligent Details

ORB details are to be comprised of not only detail lines, but also detail components. Detail components are families that can be placed in drafting or detail views. Similar to our Revit families, our revised detail components have information embedded in them.

Detail components will represent pieces or parts of assemblies that we use to put together our details.



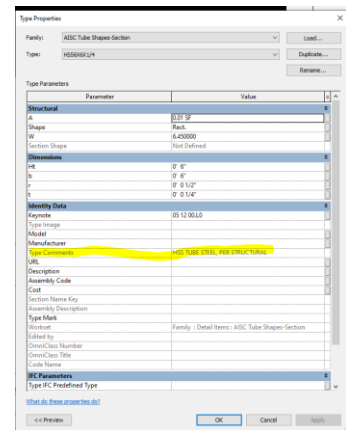
Many of these families can have additional parameters, such as length, width, orientation, array, visibility parameters, etc.

One crucial element will be the information embedded in each detail component family.

The “Type Comments” component has been locked in place with the corresponding information for that specific family.

This information can be extracted in the view by “tagging by category” in the Annotate toolbar (TG on your keyboard).

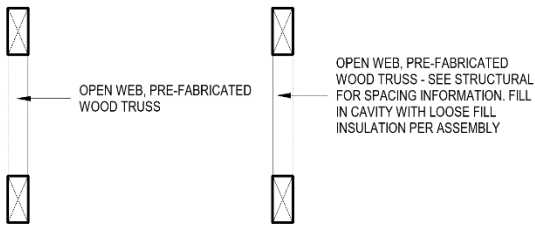
All types and instances of this family will have the same “Type Comments” information. Each family will also be able to add an instance-based comment that will be used to complement the existing information.



Type Comments + Comments = full detail text of the specific component.

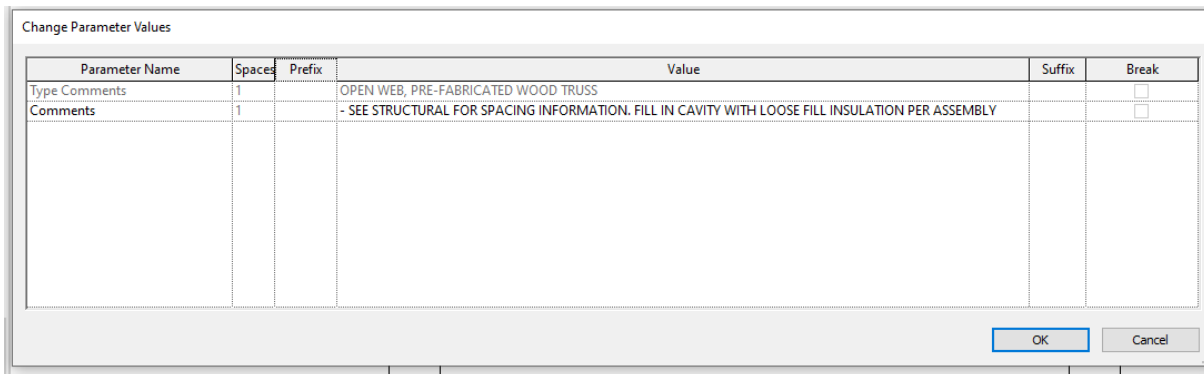


Both truss elements are the same family, both will have the same information that will describe the item, but the truss on the right now has additional information that will only occur and be viewed in that specific instance.

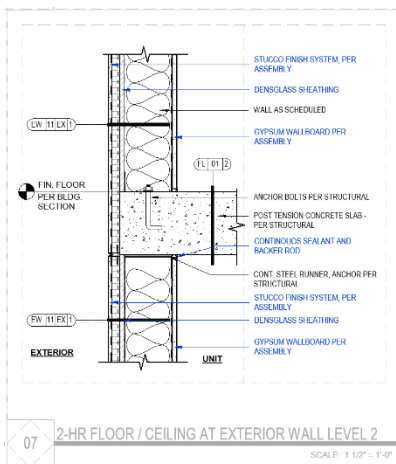


The first portion of the text will remain un-editable. The second portion of the text is instance based and can be adjusted for each element.

To edit the "Comments" parameter of the family, you will click on the tag and a new window will appear:



Type Comments will be greyed out and Comments will be available to edit. The tag comes with a pre-determined extent for the length of the text. This is to make sure that all our details follow the same format whenever possible.



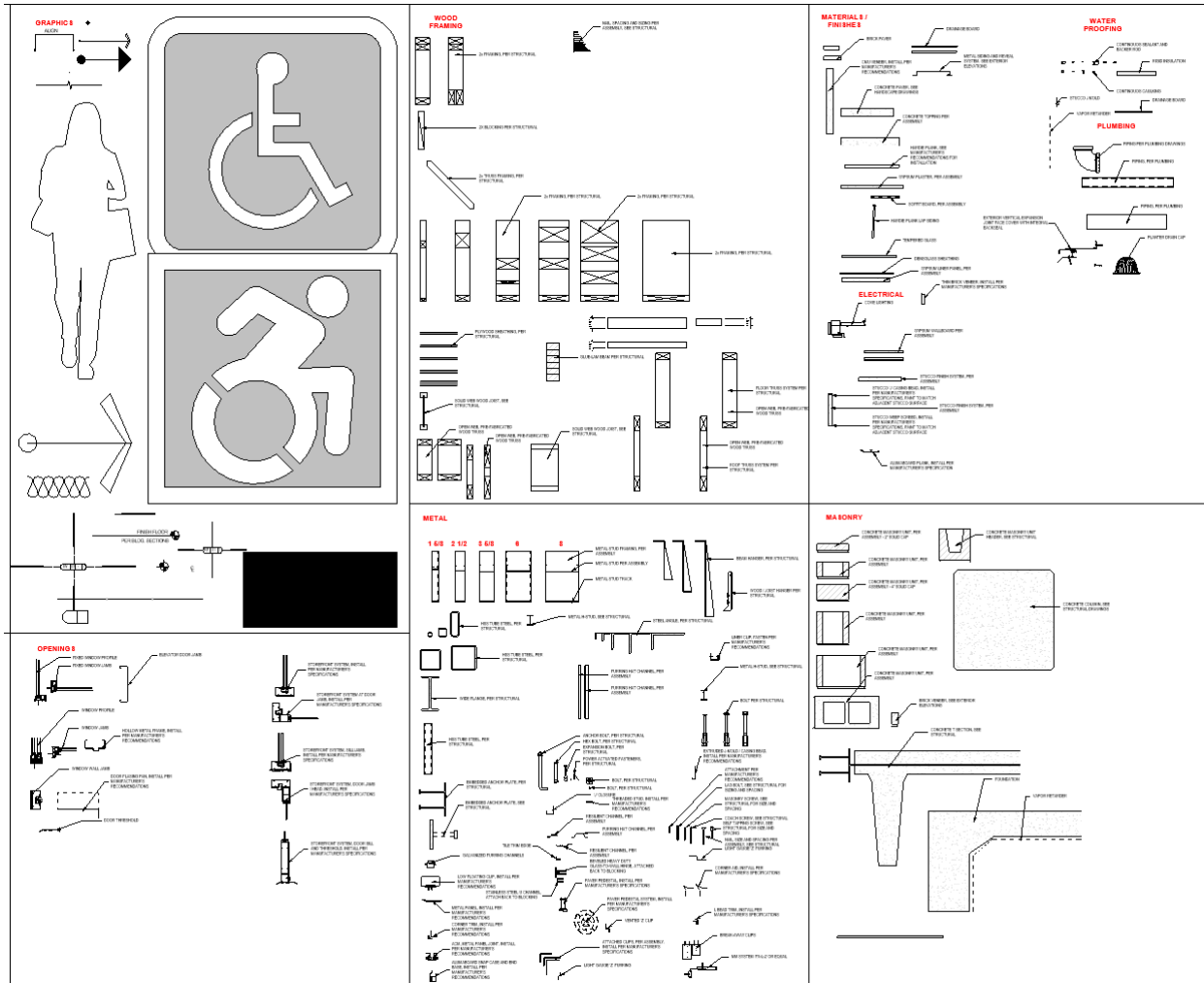
This image shows a detail with our detail components and the information that is embedded in them. The selected text (in blue) are all tags and not standard text. This causes our details to be much more consistent throughout. GYPSUM WALLBOARD will always be GYPSUM WALLBOARD and not any other variation (GWB, GB, GYP BD, GYPSUM BOARD, etc).

The intent is to reduce simple lines as much as possible and take advantage of the intelligent aspect of details in Revit.

O
V
I
N

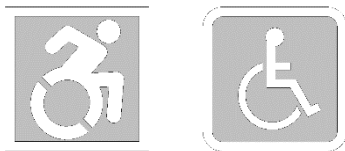


All of these detail components are in our HIVE library under the tag: **DETAIL COMPONENTS**.



Some detail components will provide you with options that are meant to be specific to your project:

The same Accessibility symbol will have the option to go between the 2018 & the 2019 versions.

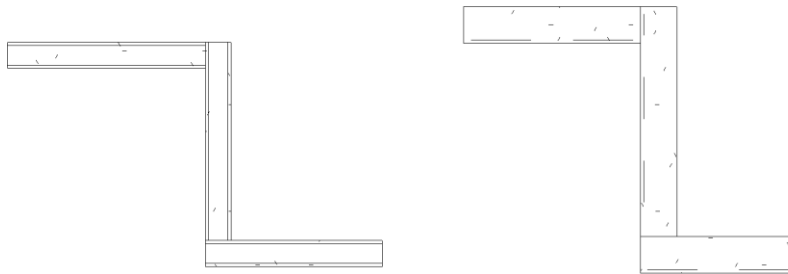


Both types will have the same basic information: **ACCESSIBLE SIGNAGE**

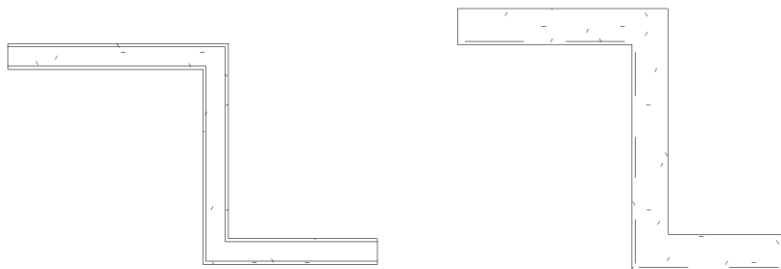


Line based stucco and line based gypsum wallboard detail components now have the ability to adjust the end pieces to be able to connect with other pieces of the same family.

Before, we had to choose which piece would overlap or where the family needed to be cut.

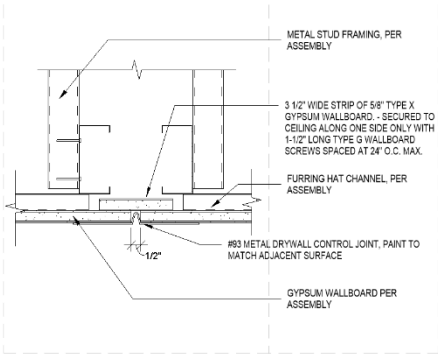


By adjusting the “Angle Start” & “Angle End” parameters we can have a continuous graphic element that is cleaner.



Check with your BIM Manager to see if other families have such capabilities or if they should be part of the family you are using.

The information placed in these families is intended to be generic. In our details we will not call out sizes, thicknesses or types of these elements if they are part of an assembly. The assembly details will call out the specific type of material, spacing, thickness, value, etc. that is to be used. It is by design that the embedded information is generic, so that our details need to reference back to the assemblies they represent – do not call out 5/8” TYPE ‘X’ GYP BOARD on a typical detail. If it is indeed Type ‘X’ or any other type, this is called out by the assembly.



General items in a detail can be called out with our tags. Project specific and construction specific items can be referenced with regular text as this detail calls out the 3 1/2" strip of gypsum board at the drywall control joint.

Tags should be on the right side of the detail and aligned with the text box column whenever possible.

06 CEILING CONTROL JOINT - NOT RATED
SCALE: 3" = 1'-0"